

Raleigh Antique Bottle and Collectibles Club Newsletter

Bottle Talk

November - December, 2013



Pepsi-Cola Seltzer Bottle from Jack Murdock's collection of Raleigh, NC bottles

Editor: Marshall Clements
blobtop@gmail.com

FOHBC member

Bottle Talk Feature Of The Month



Jac Murdock brought this unusual Pepsi-Cola seltzer bottle to "Show and Tell" and it caused quite a lot of conversation as to whether it was an authentic Pepsi bottle. Since no one could say for sure, it was immediately declared to be authentic. It will remain so until someone proves otherwise. Authentic or not, it's a pretty rare piece. Don't you wish it were yours?

SHOW AND TELL



Pem Woodlief brought this rare Hydro Incorporated bottle from Raleigh, NC to "Show and Tell". Pem has done a lot of research on this bottle and believes it to be extremely rare.

While doing research for his upcoming book on NC Bloktop Beers, David Tingen ran across some additional information on the bottle.

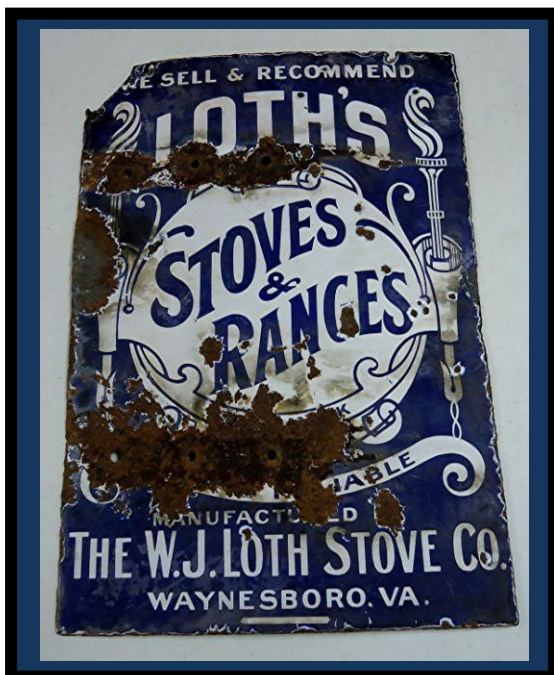
Hydro Incorporated was a Storage Battery Solutions Manufacturer with listings in the Raleigh City Directory from 1923 to 1925. The factory was located at 201 Cabarrus Street. The officer of the company were:

W.E. Hawkins.....President

E.B. Mount.....Secretary

J.W. Hinsdale.....Treasurer

The bottle is believed to have contained distilled water or battery acid.



Joe Williams shows another NC flask from his nice collection. This amethyst colored full quart dispensary flask from Smithfield, NC is just another jewel from his collection.

Porcelain signs are really getting popular and therefore getting a little more expensive. This old stove company advertisement is pretty pricey even in the rough condition. This sign is owned by RBC member Pem Woodlief.



At our Christmas meeting we ask our members to bring some unusual "non-bottle" items to "Show and Tell". The wives are always invited to the Christmas meeting and believe me they already hear enough about bottles during the year. RBC member Joe Williams brought two \$1000.00 bills. You can bet not many people attending the meeting had ever seen one of these, except maybe in their dreams. He did not pass these around.

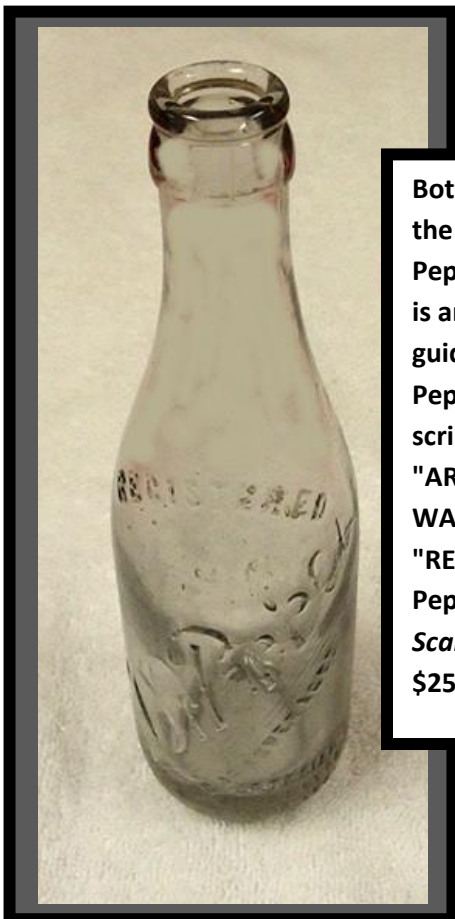


J.B. Young brought this very unusual Pet Milk Product squirt can. It is believed to be one of the first pressurized dairy products. It contained a pressurized chocolate syrup that would turn regular milk into chocolate milk with just one squirt. This can contained enough chocolate syrup to convert a gallon of milk. The design of the can made it a real hit with the kids. It is believed to be from the late 40's.

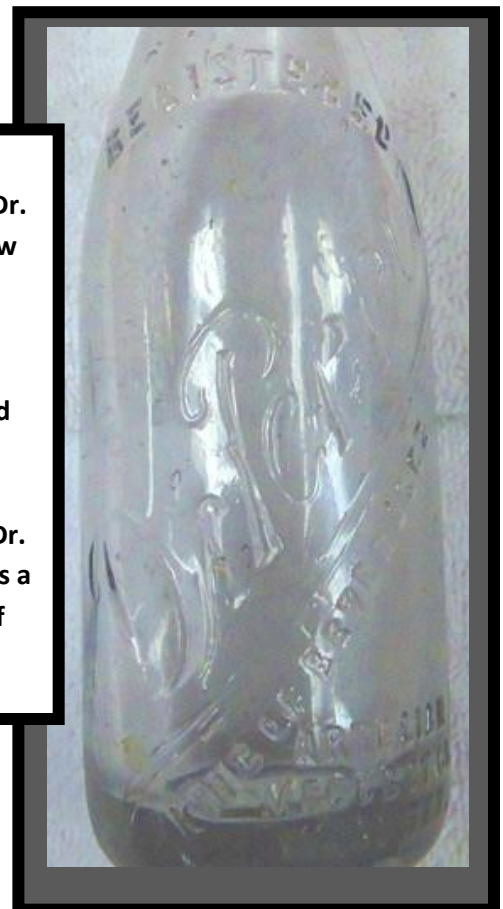


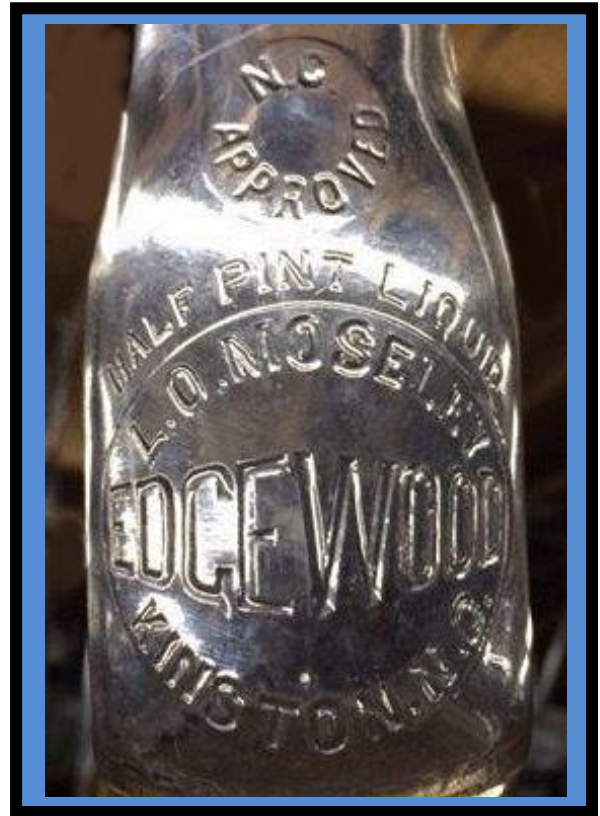
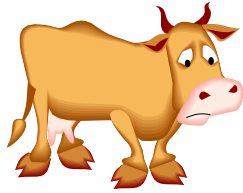


What a great item for "Ladies Night".....a wash board. This is a great reminder of how our parents and grandparents lived and how fortunate we are today. David Tingen has a fondness for his TWO in ONE glass wash board since it is from the Carolina Wash Board Co., Raleigh, NC.



Bottle Club member, Jerry Higgins, is the owner of this very nice and rare Dr. Pepper bottle. The information below is an excerpt from a Dr. Pepper price guide. The bottle is embossed "Dr Pepper, King of Beverages" in a slant script across the front. It is embossed "ARTESIAN MFG & BOTTLING CO., WACO, TEX". along the base and "REGISTERED" at the shoulder. The Dr. Pepper price guide rates this bottle as a *Scarcity 7* with an estimated value of \$250.00.





RBC member Robert Creech ran across this little half pint EDGEWOOD milk bottle a few weeks back. Robert has seen other Edgewood milk bottles but never one from KINSTON with L.O. MOSELEY embossed in a slug plate. Robert also found an old store with this ESKIMO PIE decal on the window. When was the last time you bought an Eskimo Pie for a nickel?.....probably 1940's. I wish I had one now.....maybe two.



LADIES' NIGHT CHRISTMAS PARTY 2013



GIFTS FOR THE NAUGHTY AND NICE



READER FEEDBACK

THE ALBEMARLE BOTTLING COMPANY

The following information and the "Blast From The Past" photo was forwarded to me from RBC member Robert Creech. The information was forwarded to him from Lewis Bramlett, Kennesaw GA. Thanks to Lewis and Robert for this interesting look at the early N.C. Bottling industry.

CHERO COLA – North Depot Street

In 1919 the livery building was converted to a bottling plant for Chero-Cola



Chero-Cola Plant for Albemarle
Stanly County Herald: July 17, 1919

The Chero-Cola Co. is a new concern to come to Albemarle. The company has leased the brick building of J.S. Efid on North Depot Street. The building is being improved, and the concern will install expensive machinery. This will be quite an addition to Albemarle.

Stanly County Herald: July 31, 1919

We are sure of a big thing in the shape of the plant of the Chero-Cola Bottling Company. This concern has purchased the very latest and most expensive machinery known to the present bottling industry at a cost of \$20,000 or more. This is being installed now, and the concern may, we are told, later manufacture ice on a large scale.

Stanly County Herald: September 11, 1919

The Herald is informed that the Chero Cola Bottling Company's plant is about finished and ready for business and that it will start up within the next week. The company has fine quarters in the brick building on North Depot Street near the Southern Depot. The building has been repaired and worked over inside, fitted up with excellent office rooms, etc. and present a neat appearance.

The company, will be managed by C.L. Litaker, expects to give a reception to the public as soon as it is ready to start its plant work, when sandwiches and chero cola will be served to all free. This is quite an addition to Albemarle's business strength and the town is glad to welcome the new enterprise.

Chero-Cola Bottling Co., Starts Business
Stanly County Herald: October 2, 1919

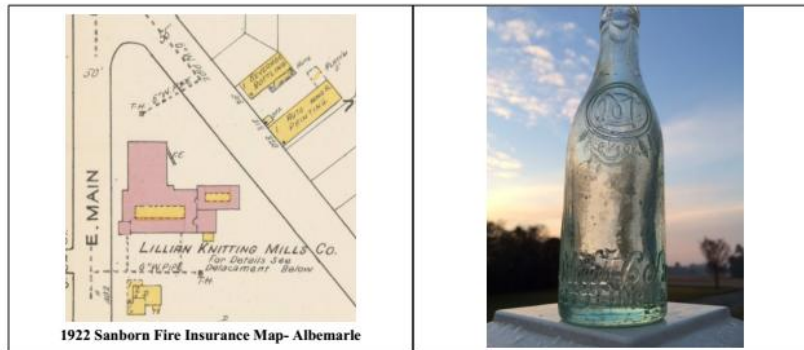
The Chero Cola Bottling Company has started up its machinery in full force and is now turning out such a lot of good drinks as to make one's mouth almost water who may chance to pass that way. This is a new Albemarle business owned by some of the town's best business men and managed by C.L. Litaker also a well-known business man of this city. The plant of the Company is located on North Depot St., just north of the Southern Depot. Mr. Litaker invites his friends in to see the new business and he will take pleasure in showing them over his place of business.

MINT COLA/ALBEMARLE BOTTLING (1916) – Five Points

Charlotte Observer: February 20, 1916

The Mint Cola Company is building a large plant near the Lillian Knitting Mills on Main Street. This is a new concern just opening up business here, and when finished will be one of the largest things of its kind in the state.

Based on the descriptions from the newspaper, the location of this business is believed to be the "Beverage Bottling" building in the upper right portion of the map.



Bottle pictures courtesy of Robert Creech of the Raleigh Bottle Club



Albemarle Enterprise: May 3, 1917

Salisbury Post- The Mint Cola Company changes its name to the Carolina Beverage Company and is increasing the capital stock by several thousand dollars, from fifty thousand to one hundred and fifty thousand.

The charter of the company having been revised and the increase authorized by the Secretary of State, the company is re-organized with the following officers:

L.D. Peeler, President
S.F. Harris, Vice President

W.C. Maupin, Secretary-Treasurer
F.T. Patterson is sales manager and will sell the increased stock

MINT COLA/ALBEMARLE BOTTLING (1916) - Five Points



Albemarle Enterprise: July 12, 1917

Stanly County Herald: October 2, 1919

The Pepsi Cola Bottling Works plant, located near the Lillian Mills was sold on Tuesday by L.D. Peeler of Salisbury, to Geo. W. Reid of this place. The Herald representative was told by Mr. Reid that he expected to start the plant to work at once. For a year or more this business has been standing still with all the machinery tied up, and the good news that this will no longer be the case will be learned with satisfaction by Albemarle people. We trust that Mr. Reid will put that characteristic push into the new business which is his custom in everything he puts his hands to, and Albemarle wishes him all kinds of success.

JOHN PATTERSON MILK BOTTLE DISPLAY

UNBELIEVABLE.....YOU DON'T WANT TO MISS IT

Has all this cold weather, snow and ice given you the urge to get out of the house and do something interesting? Well, I suggest you take a few hours and strike out to the TRANSPORTATION MUSEUM in Salisbury, NC. John Patterson has a milk bottle display at the museum that you don't want to miss. For additional information, I have attached a link to a feature story that appeared in the Salisbury Post. Don't miss out on this chance to see the rare milk bottles you have only dreamed about.

Link to the story:

<http://www.salisburypost.com/article/20140117/SP01/140119731/1184>

ATTENTION !!!New Publication.....KOCA-NOLA Price /Value-Identification Guide.

A HEAD'S UP ON KOCA NOLA



CHARLES DAVID HEAD

Of the 150+ Coca-Cola copycat soda brands known to exist during the first two decades of the Twentieth Century, Koca Nola was remarkable for three reasons:

- ★ Koca Nola was one of six major brand name sodas first marketed in embossed bottles utilizing Hutchinson's Patent Spring Stopper;
- ★ Although the syrup of other brand name sodas contained cocaine, the Koca Nola Company was one of the few firms indicted and found guilty of adulteration; and
- ★ With 61 franchises in 20 states, D.C., Mexico, and Cuba, the Koca Nola Company was one of the most successful of all the early copycat soda brands. During the company's 1906-09 heyday, Koca Nola was a top five selling U.S. soda brand.

A Head's Up On Koca Nola documents the founding, astounding growth, and demise of the Koca Nola Company, plus histories of all known franchises, 150 color and black-and-white images, Identification-Rarity-Price/Value Guide, detailed index, perfect bound, laminated soft cover, 8.5" x 11" and 176

information-packed pages. © 2013. \$29.95 with free shipping. Ordering information: www.KocaNola.com

SHOW CALENDAR

14 & 15 February 2014 (Friday & Saturday) **Columbia, South Carolina** – **41st Annual South Carolina Antique Bottle Club's Annual Show & Sale** at the Meadowlake Park Center, 600 Beckman Road, Columbia, South Carolina 29203, Friday, February 14th, 11:00 am to 6:00 pm, Saturday, February 15th, 9:00 am to 1:00 pm, NO EARLY ADMISSION FEE, Dealer Set-up, Friday the 14th, 10:00 am, Cost of admission for show & early admission: Donation at the door – Requested Boys & Girls Club of the Midlands, South Carolina Antique Bottle Club, southcarolinabottleclub.com, Contact: Marty Vollmer, President, co-show chairman, 1091 Daralynn Drive, Lexington, South Carolina 29073, 803.755.9410,

02 March 2014 (Sunday) **Baltimore, Maryland** - **34th Annual Baltimore Antique Bottle Show** at the Physical Education Center, Essex Campus, Community College of Baltimore County, 7201 Rossville Boulevard, Baltimore, Maryland 21237, Free Bottle Appraisals, For Information contact: Rick Lease, Show Chairman, 410.458.9405, finksburg21@comcast.net, For contracts: Andy Agnew, 410.527.1707, medbotls@comcast.net, BaltimoreBottleClub.org **FOHBC Member Club**

14 & 15 March 14th 2014 (Friday & Saturday) **Deland, Florida** – **Deland Florida M-T Bottle Collectors Club 44th Antique Bottle, Insulator & Tabke Top Collectible Show and Sale** at the Bill Hester Building at the Volusia County Fairgrounds, 3150 E. New York Avenue, Deland, Florida 32724, Friday, 3:00 – 7:00 pm, Saturday, 8:00 am – 3:00 pm, Early admission Friday, 3:00 pm and before 8:00 am Saturday Morning \$20, Setup for dealers, Friday 1:00 – 6:00 pm, Cost of admission for show and early admission: Friday, 3:00 pm, Early Admission \$20, Show Day Saturday 8:00 am – 3:00 pm FREE! Deland Florida M-T Bottle Club, INC., www.m-tbottleclub.com, Contact: Brian Hoblick, Show Chairman, 11721 NW County Road 236, Alachua, Florida 32615, 386.804.9635, hoblick@aol.com, Deland Florida M-T Bottle Club, **FOHBC Member Club**

15 March 2014 (Saturday) **Athens, Georgia** – **3rd annual Athens Antique Bottle & Pottery Show & Sale**, 8:30 am to 1:30 pm, at Holiday Inn Express, 513 W. Broad Street. Tables \$35, Adult admission \$7, 14 and under \$3. Table and admission tickets include free meals catered by the Holiday Inn. Holiday Inn also is offering discounted room rates top those attending the event. Space is almost twice as large as last year, with great lighting, site easy to find. It's halfway between The Varsity and the University of Georgia Arch on Highway 78 (Broad Street). For tables and more information: Sam Evans at 706.613.0224 or sam@dixiesoda.com. Web site is www.dixiesoda.com.

26 April 2014 (Saturday) **Salisbury, North Carolina** – **Piedmont Bottle & Pottery Club** proudly presents their **8th Annual Show & Sale of Bottles, Jars, Pottery and related Antique Items** at the Salisbury Civic Center, 315 S. Martin Luther King Avenue, Salisbury, North Carolina 28144. 8:00 am – 2:00 pm. Dealer set-up 6:30 am. Club Info: Jimmie Wood at 704.692.7888 or Chuck Rash at 704.732.0373. For dealer contract call show chairman Jogn Patterson at 704.636.9510 or e-mail at ncmilks@carolina.rr.com **FOHBC Member Club**

26 April 2014 (Saturday) **Aiken, South Carolina** - **Horse Creek Bottle & Pottery Club's 6th Annual Antique Bottle & Pottery Show & Sale** at the H. Odell Weeks Activities Center, 1700 Whiskey Road, Aiken, South Carolina, 9:00 am to 3:00 pm. Free admission (no early birds), free parking, small antiques & collectibles. More information: Geneva Greene, 803.593.2271.
FOHBC Member Club

The show schedule published in BOTTLE TALK will generally list shows of interest on the east coast. It is not meant to be a complete list of all upcoming shows.

There are primarily two web sites listing shows throughout the country. If you are traveling on business or taking a long needed vacation, you might want to take a look at the following sites to see if there is a show in the area:

www.fohbc.com/FOHBC_ShowCalendar2.html

www.glswk-auction.com

WANTED

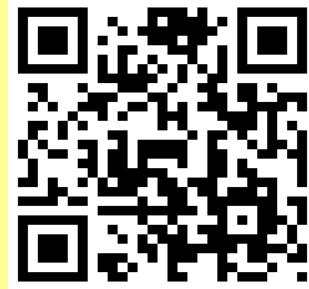
STYROFOAM COVERED SODAS

Any size larger than 20 ounce

Marshall Clements (919) 423-8557

blobtop@gmail.com

Smart Phone scan-able link to
<http://www.Raleighbottleclub.org>



Oxford Bottle Man

Taylor Currin
Antique Bottle Collector

Oxford, NC
919-939-0903
taylorcurrin@embarqmail.com
oxfordbottleman0810@gmail.com

FOR SALE

MOUNTAIN DEW

Over 300 hard to find bottles including:

...tri-city bottles

...numbered bottles

...Australian bottles

**...various hard to find bottles and
advertisement pieces**

Contact: Stan Dismukes 772-473-7730

******* WANTED *******

Raleigh, N.C. Memorabilia

(old items embossed or labeled RALEIGH, N.C.)
ephemera - advertisement - license plates -
BOTTLES

Jack is also looking for items from Lenoir, N.C.

Contact: Jack Murdock 919-829-5766

WANTED.....PAYING SERIOUS CASH

I'm looking for a rare Pepsi bottle. It is NC3 in Ayers book. It has Pepsi Cola written 15 times on the bottle. If you or anyone that you know has one, please let me know.

**I'm offering serious cash for this bottle. Thanks, Tim Mabe
carcola59@embarqmail.com**



Jar Doctor™

**Your complete source for
bottle/antique glass
cleaning equipment and supplies**

CLEANING CANISTERS

Designed to safely and professionally clean inside,
Outside and base - all at one time.
Available in white and clear PVC (3" through 7" ID)
Prices ranging from \$85 to \$225

CLEANING MACHINES

Units available, starting at \$185 for small one-canister

OXIDES

Polishing

Aluminum at \$10 per pound

Cutting

Various grits of silicon carbide
ranging from \$6 to \$12 per pound

TUMBLING COPPER

New 12 and 14 gauge chisel point in 3 sizes
\$8.50 per pound

We accept: Paypal &



For further information, contact:

R Wayne Lowry
401 Johnston Ct
Raymore, MO 64083
(816) 318-0161
(816) 318-0162 (fax)
JarDoctor@aol.com
www.JarDoctor.com

BLAST FROM THE PAST



1920 CHERO COLA BOTTLING COMPANY ALBEMARLE, NC

CHERO COLA – North Depot Street

A deed listed at the Stanly County Register of Deeds Office from January 28, 1920 shows that this building was sold by J.S. Efird to the Chero-Cola Bottling Company. (see deed book 62 page 89)

How long this building was used as a bottling plant has not yet been determined.