

Bottle Talk

MARCH – APRIL, 2013



Sterling Mann's extremely rare Pepsi-Cola medallion. Circa early 1900s

Editor: Marshall Clements
blobtop@gmail.com

FOHBC member

Bottle Talk Feature Of The Month



RARE PEPSI MEDALLION

Sterling Mann purchased this nice Pepsi medallion from another RBC member. The pre-1910 medallion is very rare. The number on the back more than likely identifies it to a particular employee, perhaps a delivery person, janitor or watchman that had a need for keys. This item is not found in any of the Pepsi reference books. We will leave the mystery to your imagination. See what you can find out in your spare time and let us know.



PRE 1910 KEY CHAIN WITH PEPSI COLA MEDALLION

FRONT: THE PEPSI COLA CO Embossed at Top;
PEPSI COLA BOTTLE Embossed in center; NEW BERN NC at bottom

BACK: IF KEYS ARE LOST FINDER WILL REPORT **822**
THIS NUMBER TO ADDRESS ON OTHER SIDE

Reader Follow-up



Thanks to David Tingen for this follow-up article on the beautiful blobtop E. DANNENBERG that was shown last month by Frank Bishop. Everyone likes to see the old bottles but when you have the story behind them it makes it a lot more interesting. Although this bottle was shown by someone else, David did the research to give us the history behind the bottle. If someone else presents something that you have information about, please pass it on to me for the newsletter. It makes a difference when you care enough to participate.

Marshall Clements

Editor: Bottle Talk

E. Dannenberg

Born: Germany 1849

Died: Wilson, NC 1928

E. Dannenberg most likely immigrated to this country in the late 1870s through Baltimore. E. Dannenberg and his son Moses were both buried in Baltimore after their deaths in Wilson, NC. E. Dannenberg in 1928 and Moses in 1929. At the time of their deaths, both were listed as merchants. Family search records indicate several Dannenberg family members in Baltimore prior to 1900.

Mr. Dannenberg is not listed in the 1900 census in New Bern while his children Abe and Rosa are shown as boarders in the New Bern home of Joseph Halen. It is prior to this time that he may have moved to the Wilson or Smithfield area. Little is known about his bottling operations in Wilson.

The featured hutch bottle is one of several types with E. Dannenberg embossing. There is also a pint size beer style with Baltimore loop top. This bears the old style New Berne embossing.

It is interesting to note that H. Damenburg (Danenburg, Dannenberg, Dannenbergh) was also listed as being in the bottling business in New Berne shortly after a business listing in Smithfield, NC. under the name of E. Danmenberg. The 1880 census lists H. Dannenberg as a merchant in Smithfield, NC. The two daughters of H. Dannenberg were married in New Bern around 1896. H. Dannenberg also operated a beer bottling plant in Rock Mount, NC where he bottled Bergner and Engel beer around 1894.

It is also interesting that Ernest Dannenberg was the Proprietor of the Coca-Cola Bottling Works in Wilson in 1908. His son Moses was Manager of the plant.

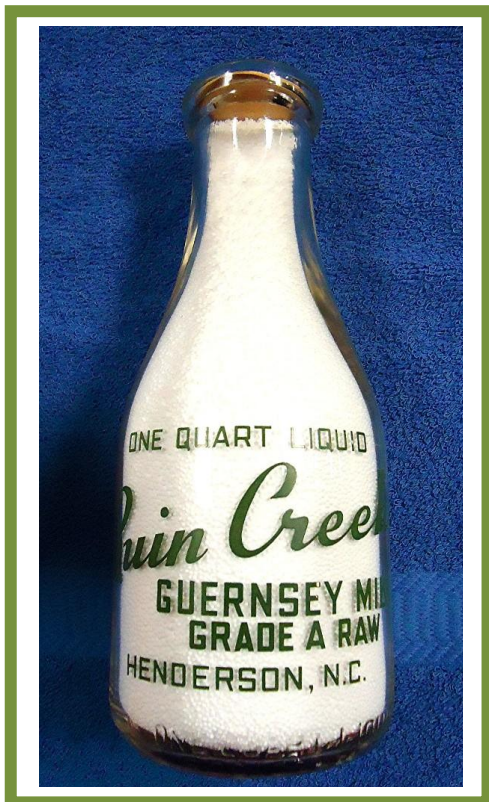
To date I have found no family ties between the two men. Could they be the same person with a variety of spellings for the one name?

Further research may determine the truth.

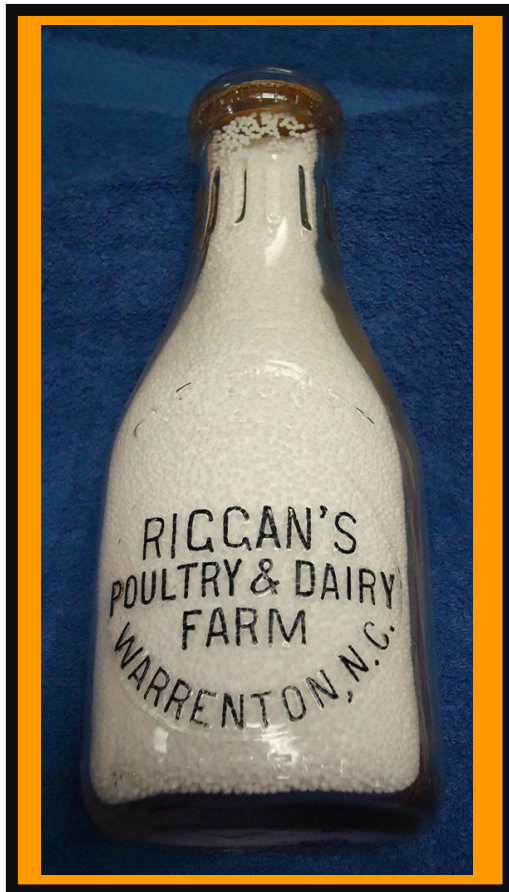
David Tingen

April, 15, 2013

N.C. MILKS



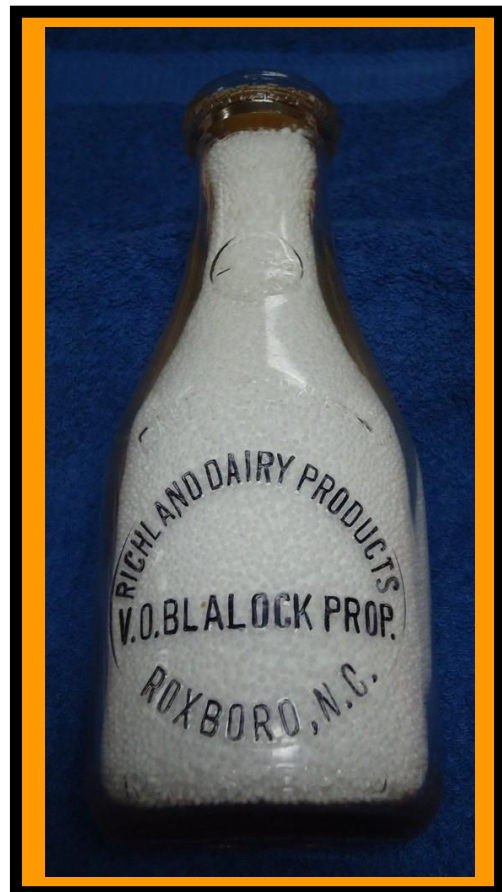
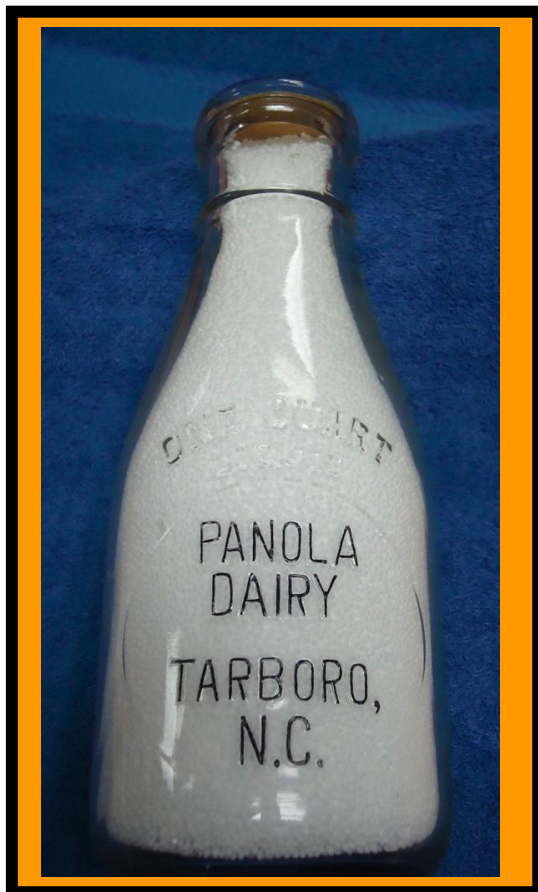
These quart green ACL milk bottles from Henderson, N.C. are two very nice additions to the collection of Travis Hardin. Both bottles are from RUIN CREEK GUERNSEY MILK. The bottle above is unusual with the block letters on the front and a nice dairy farm scene on the back. The bottle on the left has no decoration on the back. Both bottles are highly collectible.

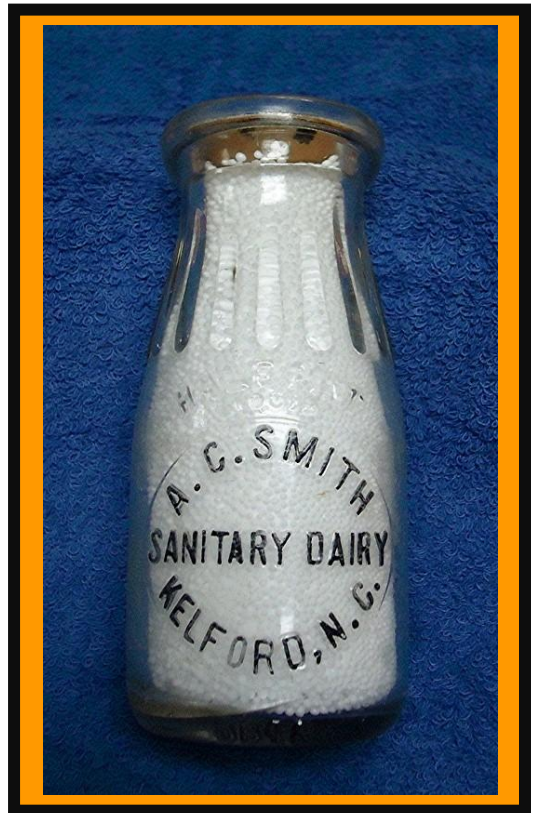
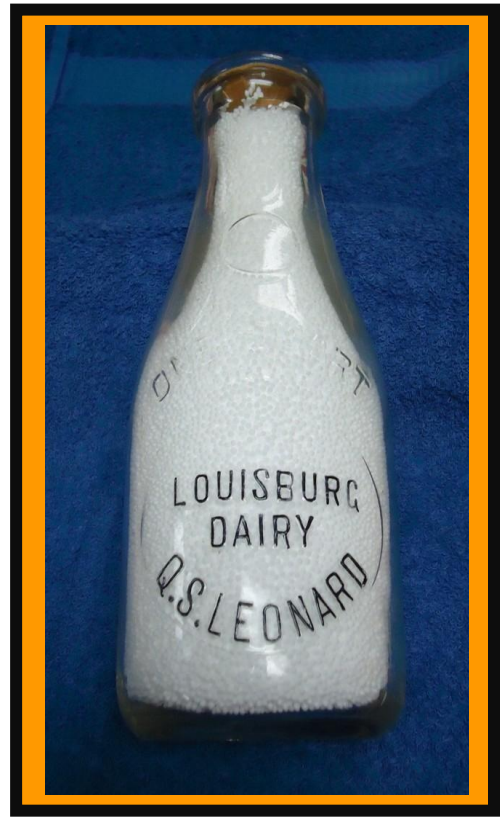


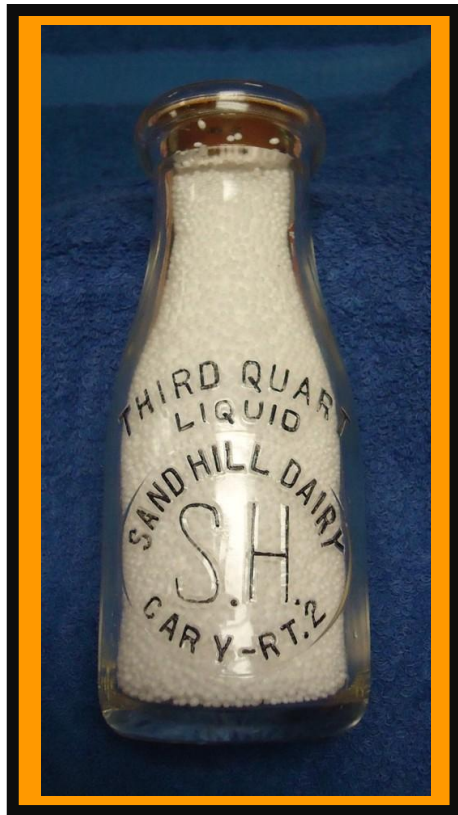
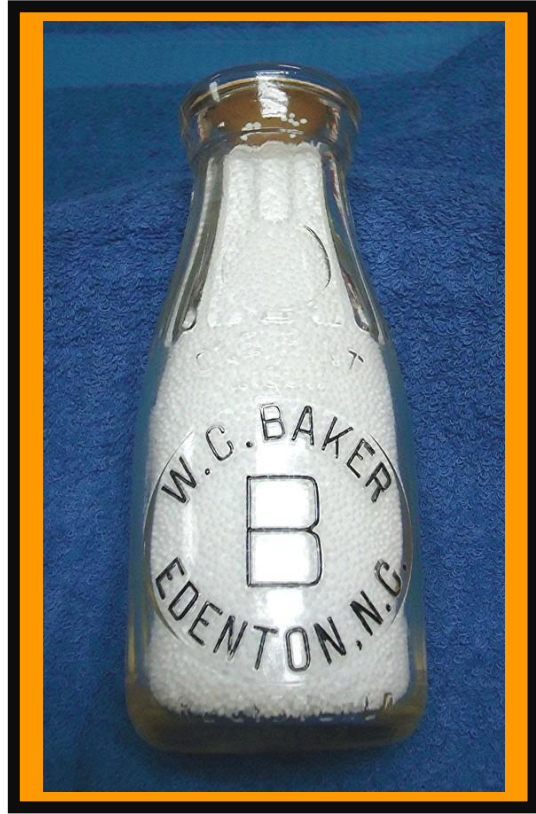
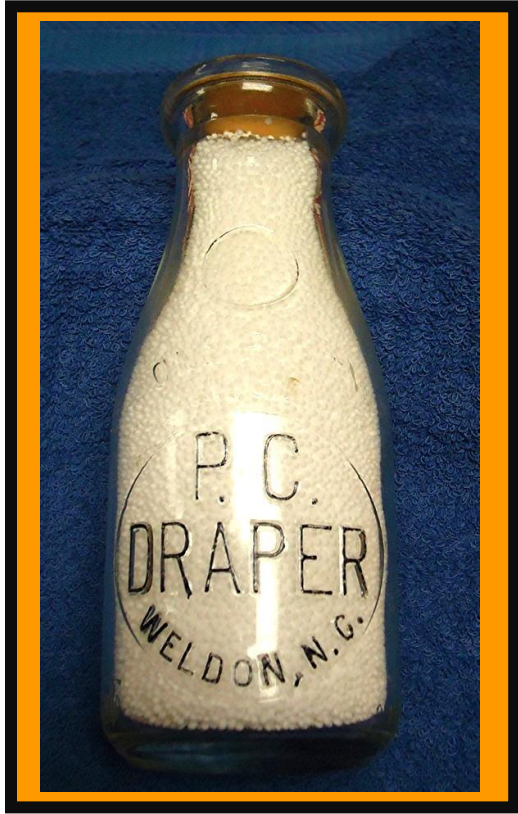
THE LOUISBURG MOO-RU

Donnie Medlin, known as the Pepsi Guru, may now have a second handle, "Louisburg Moo-ru".

Donnie negotiated a trade for these nice N.C. milk bottles. All of these are extremely hard to find. If you only had these 11 milk bottles you would have an very nice collection. For some reason I don't think this is the last you will hear from the "Louisburg MOO-Ru.

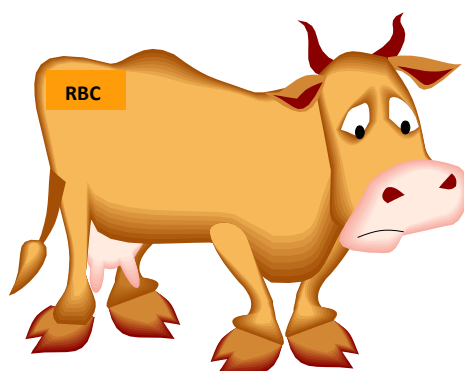




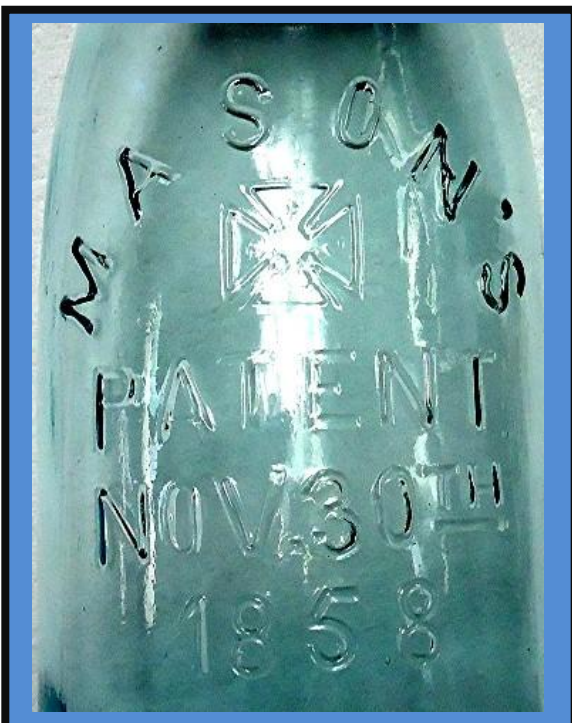
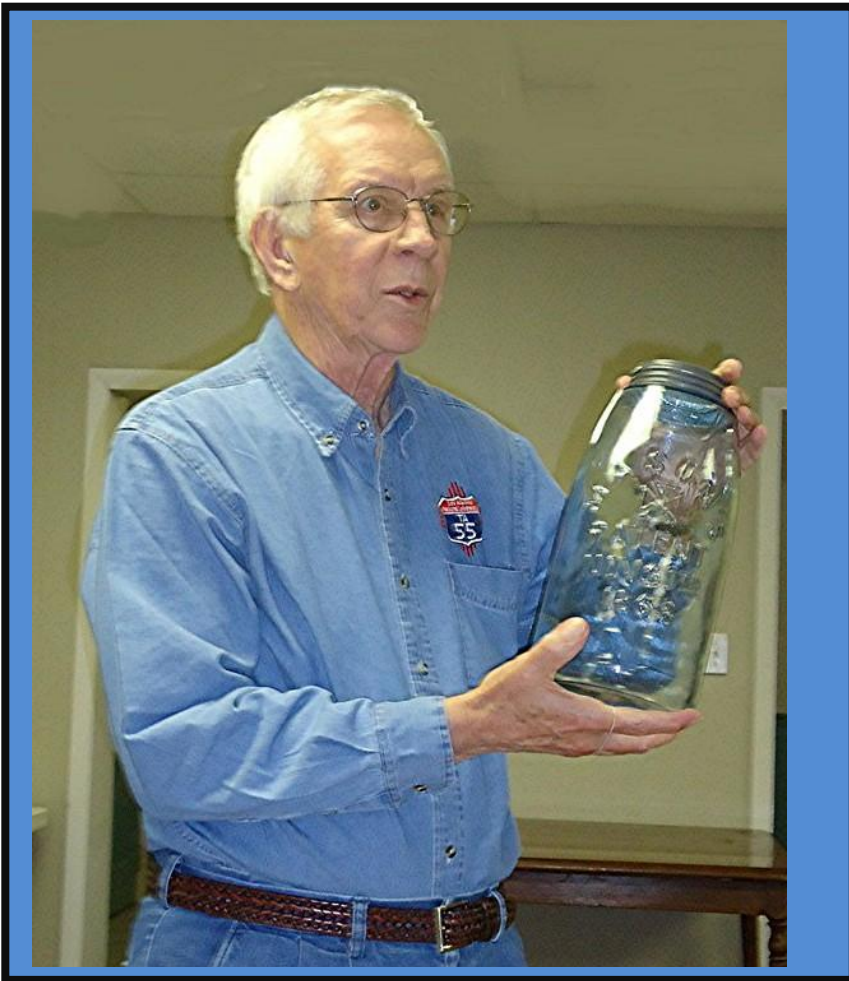




Travis Harden adds three different pint Wilmington, N.C. milk bottles to his growing collection. He is looking for the rest of the family.....the quart and ½ pint. Give him a little help.



No Bull !
BOTTLE TALK
is utterly
awesome.



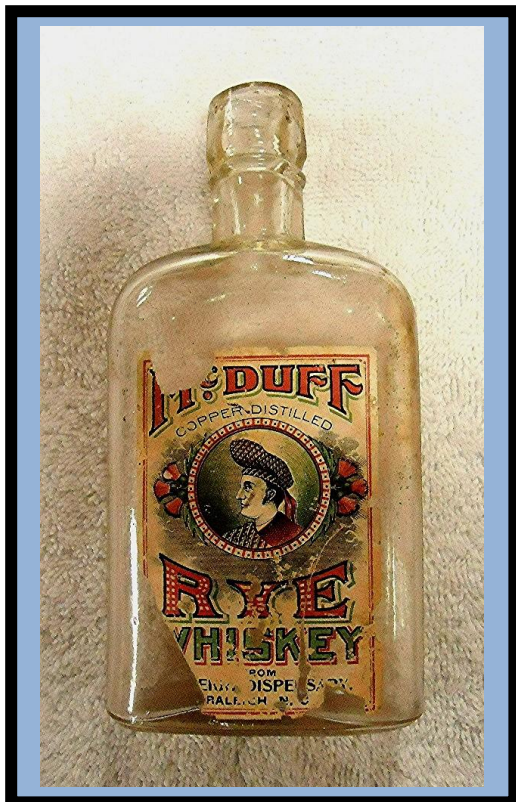
We have all seen large canning jars but this one just might carry us to a new level. Jar Collector, Joe Williams, brought this beautiful one gallon Mason's jar to 'show and tell'. Just think how long Grandma had to slave away on that old wooden stove to make enough pear preserves to fill up this monster. Thanks to Joe for sharing this unusual jar with us.



Joe Williams is always coming up with nice N.C. flasks. On the top left is the "Honest Measure" Clayton Dispensary. Top right is the nice WARRANTED Dispensary flask from Kinston, N.C. On the bottom left is a WARRANTED, FULL PINT, flask from Warrenton, N.C. All of these are pints and very difficult to come by.



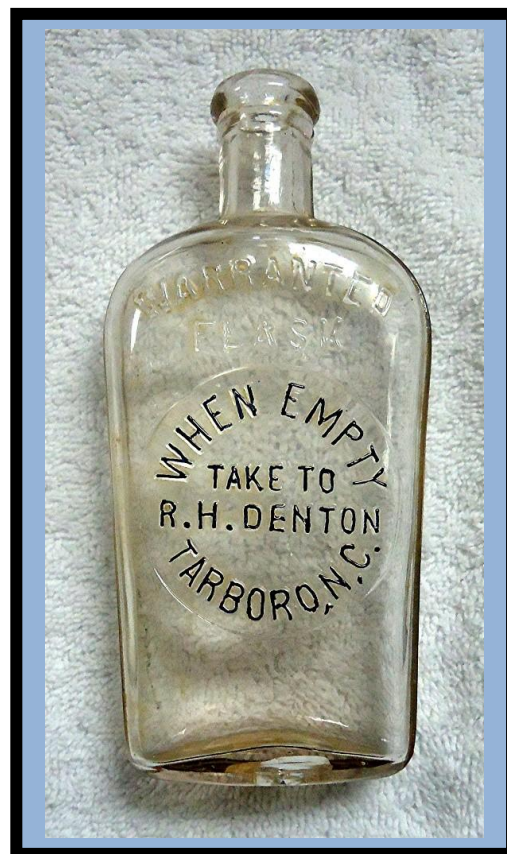
Thanks to Frank Bishop for the presentation on straight side Cokes. Frank spent most of his time talking about N.C. and Virginia bottles since it is the area of most interest to RBC members. Frank emphasized that the different colors, embossing and number of bottles issued have a lot to do with the value of the bottles. The bottles embossed with the name of a small town usually demand a better price because fewer bottles were produced there. Some of the local straight side bottles that demand a premium price are from Hillsboro, Star, and Roxboro. Keep your eyes open. You don't know what might pop up in that old barn or basement.



Jack Murdock presented these three nice Raleigh whiskey bottles for 'show and tell'. It is always a treat to see what Jack pulls out of his collection for us to see. The top photo shows a pint and ½ pint flask from the Raleigh, N.C. Dispensary. The bottom left bottle is a labeled McDUFF RYE WHISKEY that was distributed from the Raleigh Dispensary, Raleigh, N.C. Thanks to Jack for sharing part of his nice collection with the RBC.



Ron Hinsley presented these colorful bottles at "show and tell". The Wilmington and Charleston bottles were probably filled with beer or ale. The nice R.H. Denton flask from Tarboro, N.C. is a small whiskey flask.





Tom Walsh has a real passion for Railroad related items. This nice Winter arrangement (schedule) on the Paterson and Hudson River RAIL ROAD. Notice in the insert above the rail road car is being pulled by horses. This is an extremely rare piece of our early American heritage from the late 1800's.

WINTER Arrangement On the Paterson and Hudson River Rail Road



Until further notice a Passenger Car will depart from Paterson and Aquackanonk each day, (Sundays excepted) at the following hours:

FROM PATERSON, N. J.		FROM AQUACKANONK, N. J.	
At half past 8 o'clock, A. M.	At 11 o'clock, A. M.	At 1 o'clock, P. M.	At 4 o'clock, P. M.
" half past 10 do, do.	" 1 do, P. M.	" 3 do, do.	" 5 do, do.
" half past 12 do, P. M.	" 3 do, do.	" 5 do, do.	" 7 do, do.
" half past 2 do, P. M.	" 5 do, do.	" 7 do, do.	" 9 do, do.
" half past 4 do, P. M.	" 7 do, do.	" 9 do, do.	" 11 do, do.

ON SUNDAYS.

At half past 8 o'clock, A. M.	At half past 10 o'clock, A. M.
" half past 2 o'clock, P. M.	" half past 4 o'clock, P. M.

Parties of 20 or more persons can be accommodated at either of the above hours with a private Car. It is the intention of the Directors to observe punctuality in running the Cars, and the Proprietors of Stages are requested to co-operate with them.

Distance 4 1/2 miles. FARE, 1s 6d. Children under 12 years, half price.

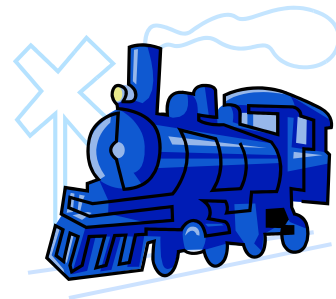
By order, E. B. D. OGDEN, Secretary.

Paterson, December 25th, 1882.



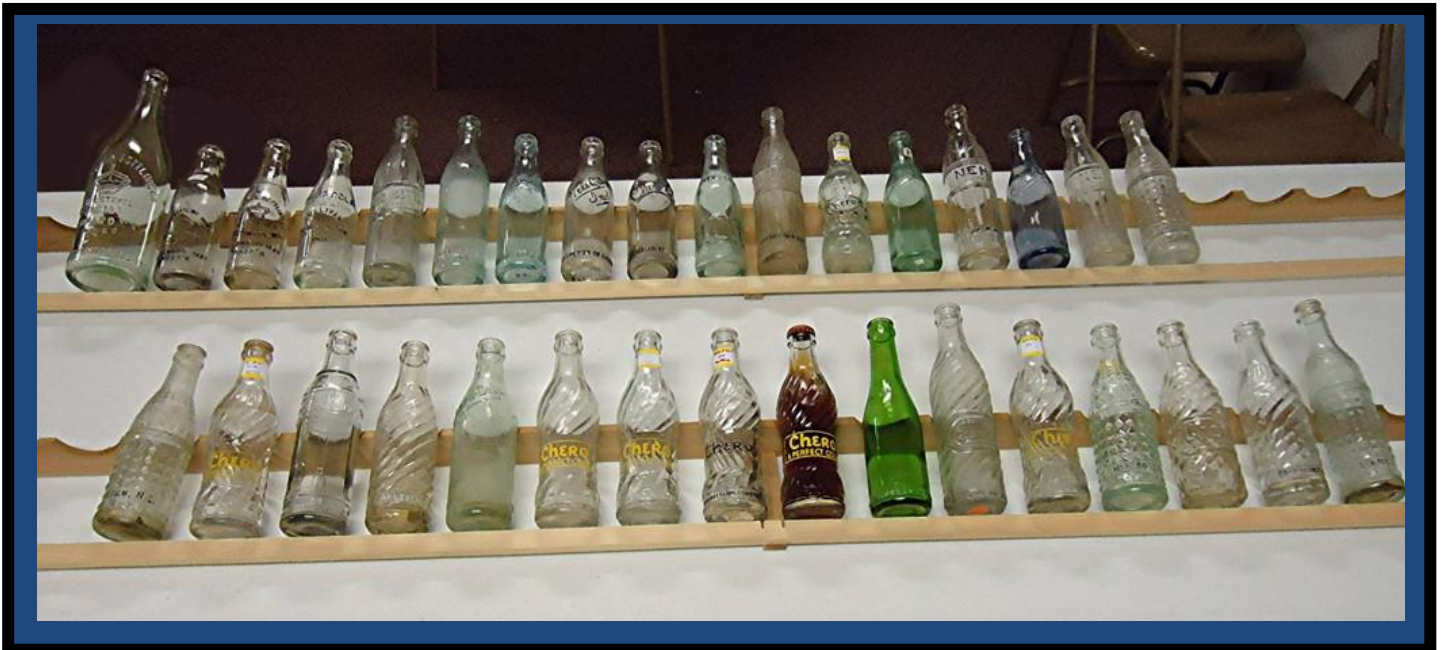
“Railroad Tom” Shines Again

Tom Walsh brought this very rare railroad lantern to “show and tell”. This is a ‘fixed globe’ lantern with an 1852 patent date. The globe has a very detailed etching of a train and the words, A. King, Conductor. If the etching doesn’t amaze you then the \$10,000.00 minimum value might. This is not your average railroad lantern. Thanks Tom for sharing this nice antique lantern with the readers of Bottle Talk.





RBC member Whitt Stallings purchased this nice double sided porcelain sign as a birthday gift for a friend who worked for the Bell System. I believe he likes this sign a little more than he originally thought. Will he let it go or will he keep it? I think I know.



RBC member Verne Eatmon gave a very interesting presentation on Cheero Cola bottles. Verne is a born collector and Cheero bottles are just one of the many things he collects. Verne tells us there are over 800 towns that bottled Cheero. Knowing Verne and his passion for collecting, there are a lot of Cheero bottles in his future.



Turpentine Scraper



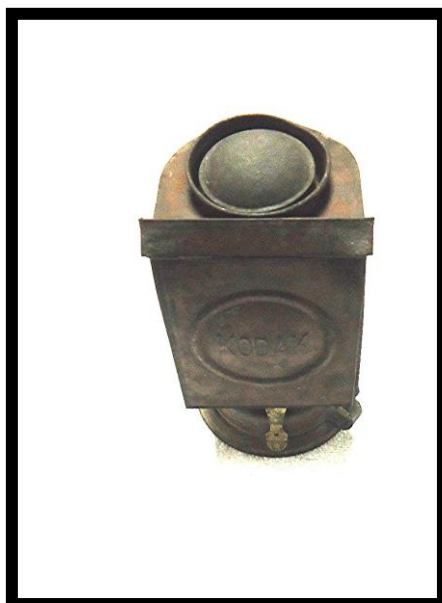
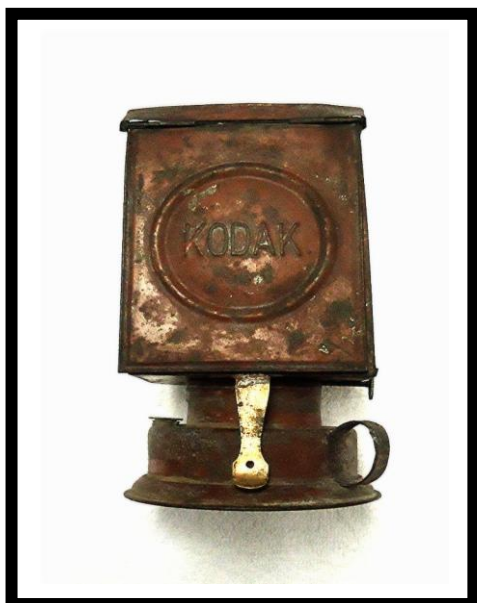
A. J. Baker, who grew up in the Bakers Chapel area of the county, described the naval stores industry here this way:

I was raised on a farm and had every opportunity to observe just what was going on in and around that small farm surrounded by almost a primeval forest where workers of the industry were constantly seen during the summer season. Nearly all of the farms were small and provided only provisions consumed at home. Hence the turpentine industry to bring in a little cash.

The tools used in carrying on the industry were the boxing ax, the hack, the puller, the dipper, the scraper, the bucket, the scrape box, and the barrel. Some of these implements, I know seem foreign to many of the people living today, and I wish I had some of them at least, with me so that I could demonstrate how they were used. The predominating forest of trees, at that time, was the long leaf pine from which the sap was extracted. A notch or box, as it was called was cut near the ground in the tree, holding about a quart. This was done with a boxing ax. The next tool used was the hack, which was used applying streaks until the face of the tree became about a head high. Then the streaks were applied by the puller. The streaks were applied weekly during the spring and summer. Usually the streaks would dry out in a weeks time stopping the flow of sap. Then, of course, a new one must be applied to start the sap flow again. When the notch or box mentioned was full of sap or turpentine, as it was called, it was ready to be dipped, put in barrels and hauled to market. This was known as dip turpentine.

During the spring and summer season, the working period, I just mentioned, some of the sap would lodge on the face of the boxed tree. The face I'd better explain, is where the numerous streaks had been made by the hack or by the puller. Since not all of the sap of the tree would reach the box below; some of it would lodge on the face. Here it would harden flake white, lose much of its liquid appearance, and become a sort of dry turpentine. During the summer season, the accumulation of this turpentine amounted to quite an item. During the fall and winter, this turpentine was scraped from the face of the tree, gathered in suitable boxes, packed in barrels, and was ready for market. This was known as scraped turpentine and gave the workers something to do during the off season. The trees were now again ready for the prime summer season.

For a more in depth look at the N.C. Turpentine follow the link : [Timber and Turpentine Industries - Horry County Historical Society](#) The information above was a directly extraction from that article.



Sterling Mann brought this very unusual lantern for "show and tell". This was a photography dark room lantern produced by KODAK. This lantern was used around the turn of the century.

SHOW CALENDAR

30 May – 01 June 2013 (Thursday – Saturday) **Grantville (Hershey), Pennsylvania – 33rd National Association of Milk Bottle Collectors (NAMBC) Annual Convention** at the Holiday Inn in Grantville at the junctions of Interstates 80 and 81. For more information visit www.milkbottlecollectors.com or email Penny Gottlieb, PennyGottlieb18@gmail.com, [Download Press Release](#) **FOHBC Member Club**

08 June 2013 (Saturday) **Raleigh, North Carolina – The Raleigh Bottle Club Annual Show & Sale**, public \$3: 9:00 am – 3:00 pm, dealer setup: 7:00 – 8:00 am at the James Martin Building on the North Carolina State Fairgrounds, 1025 Blue Ridge Road, Raleigh, North Carolina. Info: Whitt Stallings, 919.781.6339, awhittstallings@planetebay.net www.raleighbottleclub.org **FOHBC Member Club**

22 June 2013 (Saturday) **Tallahassee, Florida** – **7th Annual Tallahassee Antique Bottle Show & Sale**, at the North Florida Fairgrounds, 441 Paul Russell Road, Tallahassee, Florida 32301, Saturday, June 22nd – show starts at 9:00 am and closes at 3:00 pm. Early Admission: Friday, June 21st – dealer set up beginning at 3:00 pm; early bird/buyer starts at 5:00 pm, Set up – Friday 3:00 pm; Saturday 8:00 am, \$3 admission; early admission on Friday is \$15 and includes a dinner, Visit Florida Bottles, www.floridabottles.com, Contact: Britt Keen, 1140 Renae Way, Tallahassee, Florida, 850.294.5537, britt_keen@hotmail.com Kramerich, PO Box 241, Pensacola, Florida 32591. 850.4355425. Email: daphnebottleshow@gmail.com

27 July 2013 (Saturday) **Birmingham, Alabama** **10th Annual Birmingham Antique Bottle & Folk Pottery Show**, Bessemer Civic Center, 1130 9th Ave SW, Bessemer, Alabama 35022, Saturday, 27 July from 8:00 am thru 3:00 pm, Early Buyers on Friday, 26 July from 4:00 pm thru 8:00 pm, Dealer Set up Friday, 26 July from 4:00 pm thru 8:00 pm, Saturday FREE Public Admission; Friday Early Buyers \$10, Alabama Bottle Collectors, www.alabamabottlecollectors.com, Tom Lines, Show Chairman, PO Box 382831, Birmingham, Alabama 35238, 205.410.2191, albottlecollectors@hotmail.com **FOHBC Members Show**

27 & 28 July 2013 (Friday & Saturday) **Adamstown, Pennsylvania** – **12th Annual Shupp's Grove Bottle Festival** at the famous 'Shupp's Grove', 1686 Dry Tavern Road, Denver, Pennsylvania 17517, 6:00 am to dusk, early buyers Friday, 3:00 pm, Contact Info: Steve Guion, 717.626.5557 affinityinsurance@dejazzd.com

28 September 2013 (Saturday) **Memphis, Tennessee** – The Memphis Bottle Collectors Club presents their **28th Annual Antique Bottle & Advertising Show** at Agricenter International, 7777 Walnut Grove Road, Memphis, Tennessee 38120, Collectors from 25 States, 9:00 am – 4:00 pm, Early Admission Available, Admission \$5.00, www.memphisbottleclub.com, Show Chairman: Gene Bradberry, 3706 Deerfield Cove, Bartlett, Tennessee 38135, Tele: 901.372.8428 or 901.359.8428, **FOHBC Member Club**

29 September 2013 (Sunday) **Greensboro, North Carolina** – **12 Annual Greensboro Antique Bottle Show** at the Farmer's Curb Market, 501 Yanceyville Street, Greensboro, North Carolina 27405, Sunday, 9:00 am – 3:00 pm, No early admission, Dealer setup Sunday 7:00 – 9:00 am, Admission: \$1, [Southeast Bottle Club](http://SoutheastBottleClub.com), Contact: Reggie Lynch, President, PO Box 2286, Forest, Virginia 24551, 704.221.6489, rlynch@antiquebottles.com, **FOHBC Member Club**

The show schedule published in BOTTLE TALK will generally list shows of interest on the east coast. It is not meant to be a complete list of all upcoming shows.

There are primarily two web sites listing shows throughout the country. If you are traveling on business or taking a long needed vacation, you might want to take a look at the following sites to see if there is a show in the area:

www.fohbc.com/FOHBC_ShowCalendar2.html

www.glswk-auction.com

WANTED

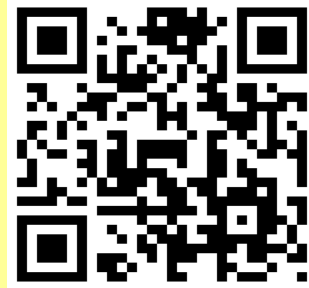
STYROFOAM COVERED SODAS

Any size larger than 20 ounce

Marshall Clements (919) 423-8557

blobtop@gmail.com

Smart Phone scan-able link to
<http://www.Raleighbottleclub.org>



Oxford Bottle Man

Taylor Currin
Antique Bottle Collector

Oxford, NC
919-939-0903
taylorcurrin@embarqmail.com
oxfordbottleman0810@gmail.com

FOR SALE

MOUNTAIN DEW

Over 300 hard to find bottles including:

...tri-city bottles

...numbered bottles

...Australian bottles

**...various hard to find bottles and
advertisement pieces**

Contact: Stan Dismukes 772-473-7730

******* WANTED *******

Raleigh, N.C. Memorabilia

(old items embossed or labeled RALEIGH, N.C.)

ephemera - advertisement - license plates

- BOTTLES -

Contact: Jack Murdock 919-829-5766

******* WANTED *******

TAB BOTTLES

**Will pay reasonable price for unusual
colors or odd sized TAB bottles.**

Contact: DeeAnn Nichols

919-383-2094

BLAST FROM THE PAST



Henderson, N.C. Uncovered sign from the past Uncovered 2013 during demolition

Verne Eatmon brought this newspaper photo to show and tell. When an adjacent building was demolished this old Coca-Cola sign once again came to life, but only for a short time. A very quick thinker made this historic picture before the building disappeared forever at the hands of a wrecking ball. The sign was painted sometime in the early 30's on the side of Pittman's Drug Store in Henderson, NC. Verne is looking for information about this old drug store. If you have any information please contact Verne at 252-438-2981